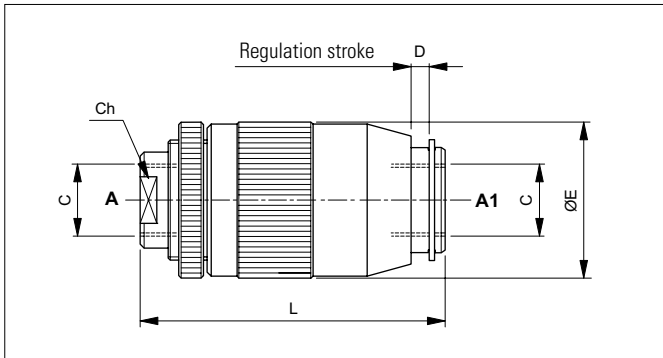


## SLEEVE FLOW CONTROL VALVES UNIDIRECTIONAL AND BIDIRECTIONAL - IN-LINE MOUNTING



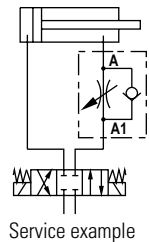
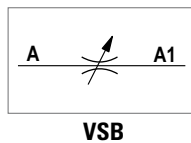
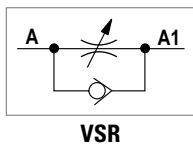
Flow control valve using non compensated throttling. The flow is reduced in only one direction (A to A1) for VSR valves and in both directions for VSB valves, by turning the outer casing of the valve right or left. Slight leakage is tolerated when the control screw or wheel is completely unscrewed. It has a galvanised steel body. The check valve ball poppet is in tempered and ground steel.

Code	C	Flow max (l/min)	Pressure max (bar)	L (mm)	E (mm)	D (mm)	Ch	Weight (kg)
VSR-VSB 0400	1/4 BSP	15	350	62	31	4.2	19	0.23
VSR-VSB 0600	3/8 BSP	30	350	73	38	4	24	0.42
VSR-VSB 0800	1/2 BSP	45	350	83	45	7.5	30	0.66
VSR-VSB 1200	3/4 BSP	85	300	102	54	10.5	36	1.12
VSR-VSB 1600	1 BSP	130	250	122	65	10	41	1.94

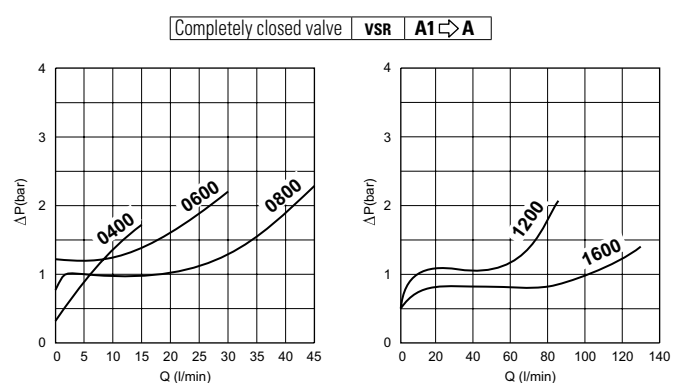
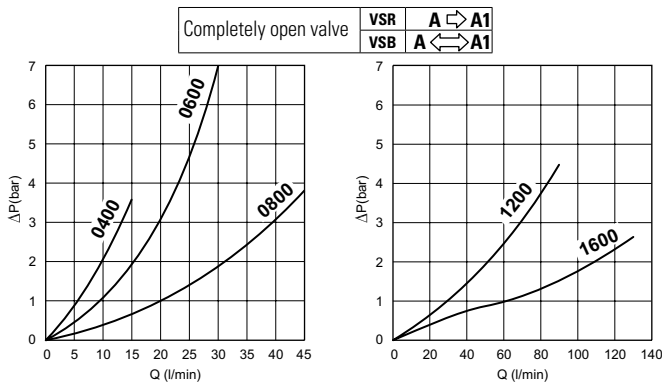
### HYDRAULIC FEATURES

Hydraulic fluid	DIN 51524 Mineral oils
Fluid viscosity	10 ÷ 500 mm <sup>2</sup> /s
Fluid temperature	-25°C ÷ 75°C
Ambient temperature	-25°C ÷ 60°C
Max. contamin. level class with filter	ISO 4406:1999 - class 19/17/14

### HYDRAULIC SYMBOLS

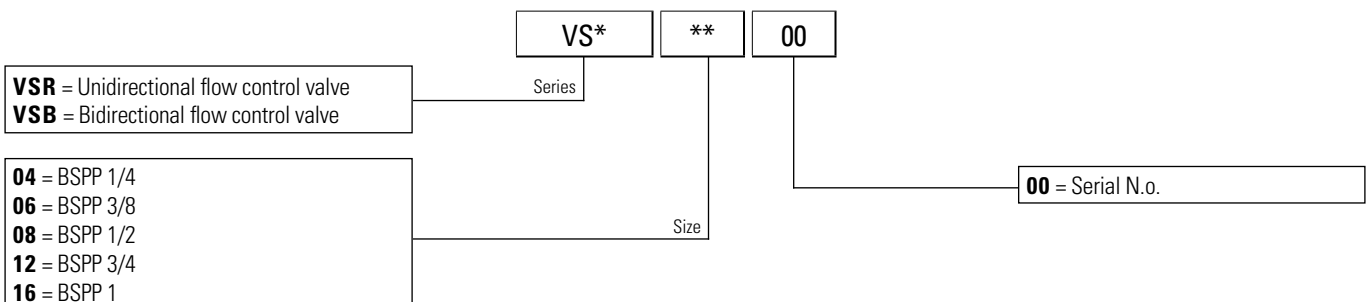


### PRESSURE DROPS

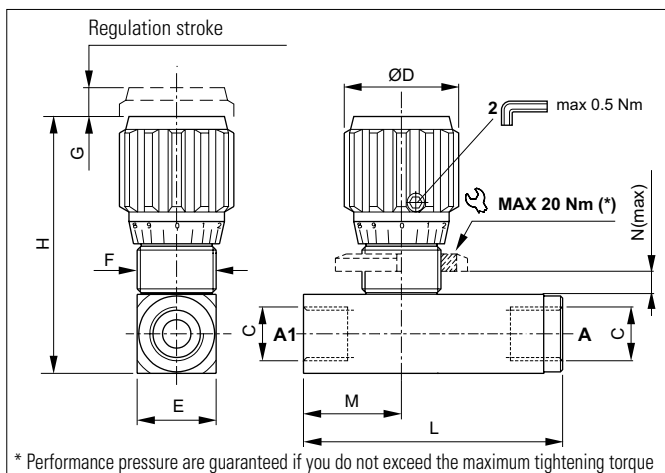


Fluid used: mineral based oil with viscosity 15 mm<sup>2</sup>/s at 40°C.

### ORDERING CODE



## UNIDIRECTIONAL AND BIDIRECTIONAL FLOW CONTROL VALVES - IN-LINE MOUNTING



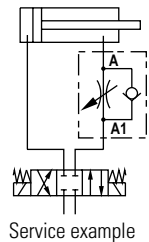
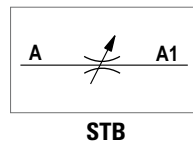
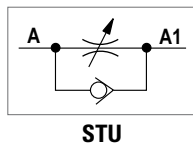
Flow control valve using non compensated throttling. The flow is reduced in only one direction (A to A1) for STU valves and in both directions for STB valves, turning the wheel with locking screw right or left. Guarantees excellent mechanical seal with negligible leakage. It has a galvanised steel body. The check valve tapered poppet is in tempered and ground steel.

### HYDRAULIC FEATURES

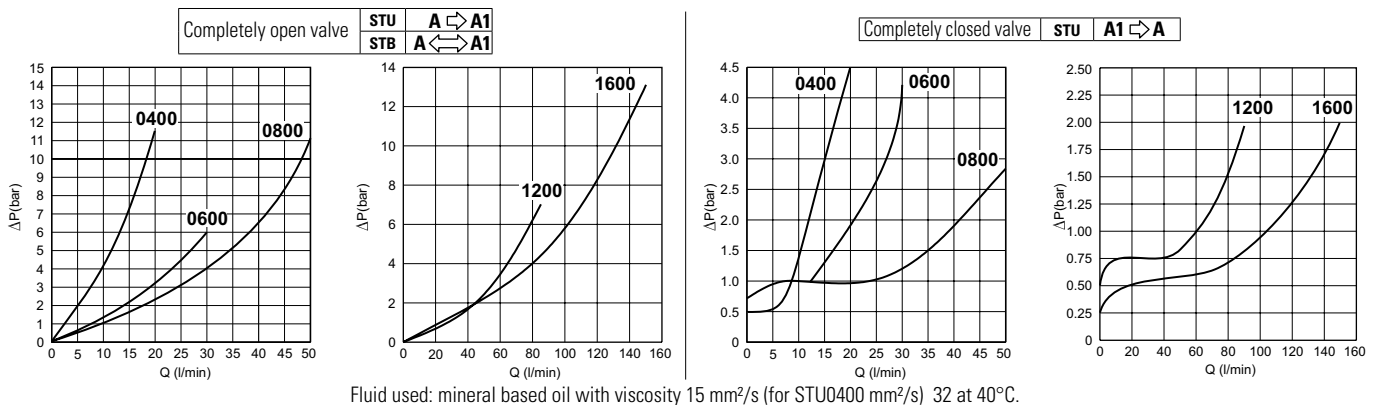
Hydraulic fluid	DIN 51524 Mineral oils
Fluid viscosity	10 ÷ 500 mm <sup>2</sup> /s
Fluid temperature	-25°C ÷ 75°C
Ambient temperature	-25°C ÷ 60°C
Max. contamin. level class with filter	ISO 4406:1999 - class 19/17/14

Code	C	Flow max (l/min)	Pressure max (bar)	L - STU (mm)	L - STB (mm)	H (mm)	D (mm)	E (mm)	F (mm)	G (mm)	M (mm)	N max (mm)	Weight - STU (kg)	Weight - STB (kg)	Weight screw (kg)
STU-STB 0400	1/4 BSP	20	400	73	54	68.5	31.5	20	M20x1	6	27	7	0.26	0.21	0.020
STU-STB 0600	3/8 BSP	30	400	82	62	80.5	35.5	25	M25x1.5	9.5	31	7	0.44	0.37	0.031
STU-STB 0800	1/2 BSP	50	350	98	73	93	41	30	M30x1.5	8	36.5	9	0.73	0.59	0.043
STU-STB 1200	3/4 BSP	85	320	112	84	110	47	40	M35x1.5	13	42	11	1.36	1.10	0.067
STU-STB 1600	1 BSP	150	300	142	100	121.5	47	45	M40x1.5	11.5	50	15	2	1.52	0.090

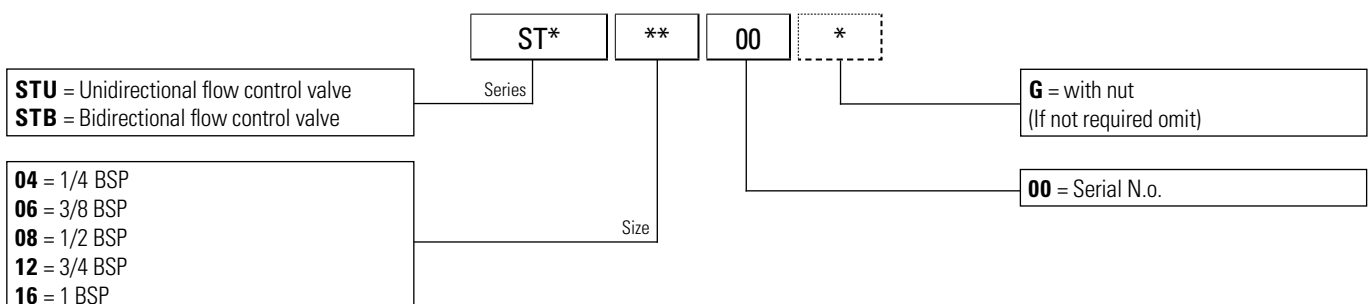
### HYDRAULIC SYMBOLS



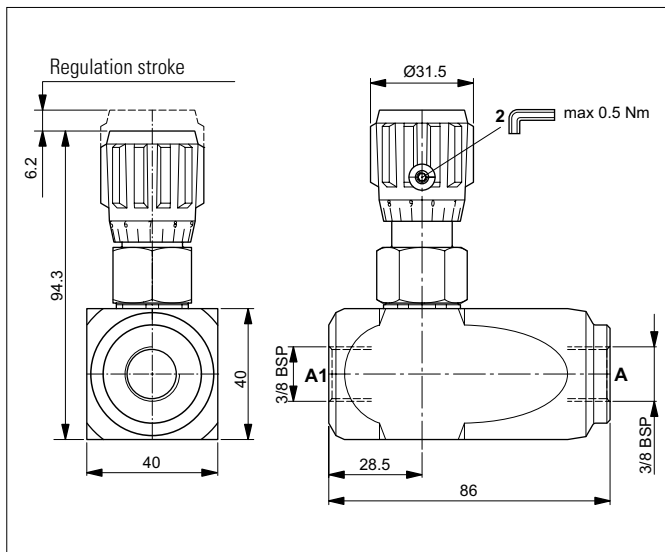
### PRESSURE DROPS



### ORDERING CODE



## PRESSURE COMPENSATED FLOW UNIDIRECTIONAL FLOW CONTROL VALVES - IN-LINE MOUNTING

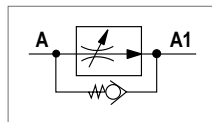


The valve maintains the flow rate in one direction (A to A1) regardless of oil pressure; the oil flows freely in the opposite direction. The flow is reduced by turning the wheel right or left. Slight leakage is tolerated when the control screw or wheel is screwed down completely. It has a galvanised steel body. The compensator plunger and check valve ball poppet are in tempered and ground steel.

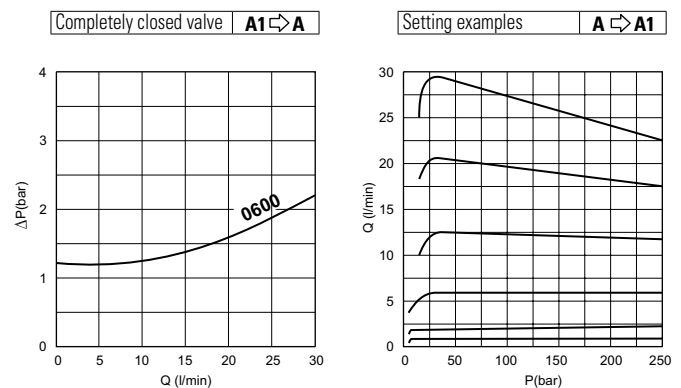
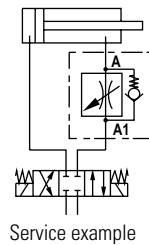
### HYDRAULIC FEATURES

Max. working pressure	250 bar
$\Delta P$ of regulation	12.6 bar
Max. Flow	29 l/min
Hydraulic fluid	DIN 51524 Mineral oils
Fluid viscosity	10 ÷ 500 mm <sup>2</sup> /s
Fluid temperature	-25°C ÷ 75°C
Ambient temperature	-25°C ÷ 60°C
Max. contamin. level class with filter	ISO 4406:1999 - class 19/17/14
Weight	0.95 kg

### HYDRAULIC SYMBOL



### PRESSURE DROPS



Fluid used: mineral based oil with viscosity 32 mm<sup>2</sup>/s at 40°C.

### ORDERING CODE

